



**THANK YOU,
ST PAUL
UMC!**





OUR MISSION: To house, support, and advocate for people experiencing homelessness.

OUR PROGRAMS

Shelter

- Located in south Minneapolis since 1982.
- Open 5 PM – 9 AM every day of the year.
- Serves 22 women and 44 men.
- Shelter guests stay for 28 days and work with staff to eliminate housing barriers and move into stable housing.
- Savings program allows guests to stay longer and encourages saving money for housing.

Housing for Individuals

- Housing programs that specialize in women, people with mental illness, and people with disabilities.
- Individuals were homeless 8-9 years on average before entering the program.
- SHS provides regular support, community connections, and a rental subsidy to make rent affordable.

Housing for Families

- A variety of housing programs for over 200 families with children.
- SHS provides regular support for parents and children; including parenting workshops, connections to employment and health services, early childhood services, education support, mentoring, and tutoring.
- The average length of services is 22 months.





OUR NEWEST PROGRAMS

Adult Shelter Connect

- The five Minneapolis shelters serving single adults formed the Single Adult Shelter Collaborative.
- Simpson coordinates the Adult Shelter Connect which assists single adults in accessing and navigating the shelter system in a more logical and dignified way.
- Located at St Olaf Church downtown

Youth Housing

- 39 apartments of supportive housing for youth and young adults experiencing homelessness.
- Location:
3360 W. 66th St. Edina



2016-17 COMMUNITY IMPACT



2016-2017
IMPACT

PEOPLE SERVED = **2,997**

PLACED 1,139 PEOPLE INTO HOUSING

266 FAMILIES with **533** CHILDREN

1,867 MEN & WOMEN
received services at Simpson Shelter

INDIVIDUALS WHO MOVED DIRECTLY
FROM THE SHELTER INTO HOUSING = **127**

*Reporting period from July 1, 2016-June 30, 2017.



UNDERSTANDING & ENDING HOMELESSNESS

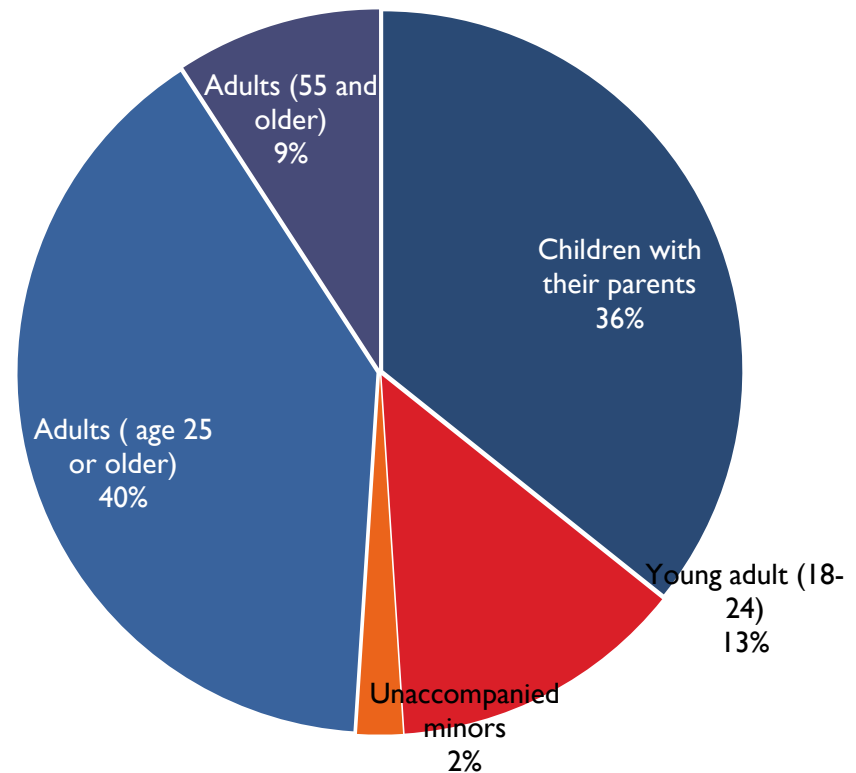


“IT IS IMPORTANT TO UNDERSTAND THAT ENDING HOMELESSNESS DOES NOT MEAN THAT NO PERSON WILL EVER FACE A HOUSING CRISIS. RATHER, IT MEANS THAT COMMUNITIES WILL DEVELOP SYSTEMS TO ENSURE THAT HOUSING CRISES THAT LEAD TO HOMELESSNESS WILL BE PREVENTED WHENEVER POSSIBLE.”

-CATHY TEN BROEKE, MPA
**MN DIRECTOR TO PREVENT AND
END HOMELESSNESS**

HOMELESSNESS IN MN

- Close to 10,000 Minnesotans homeless on any given night and 40,000 Minnesotans homeless per year
- 3,300 children, half are 5 and younger
- Main Cause: Lack of affordable housing
 - # hours at min wage to afford a market-rate 2 bdrm = 79
 - \$17.76/hour required to afford average 2 bedroom unit
 - Average wait for subsidized housing = 3-5 years
- African Americans and American Indians disproportionately impacted



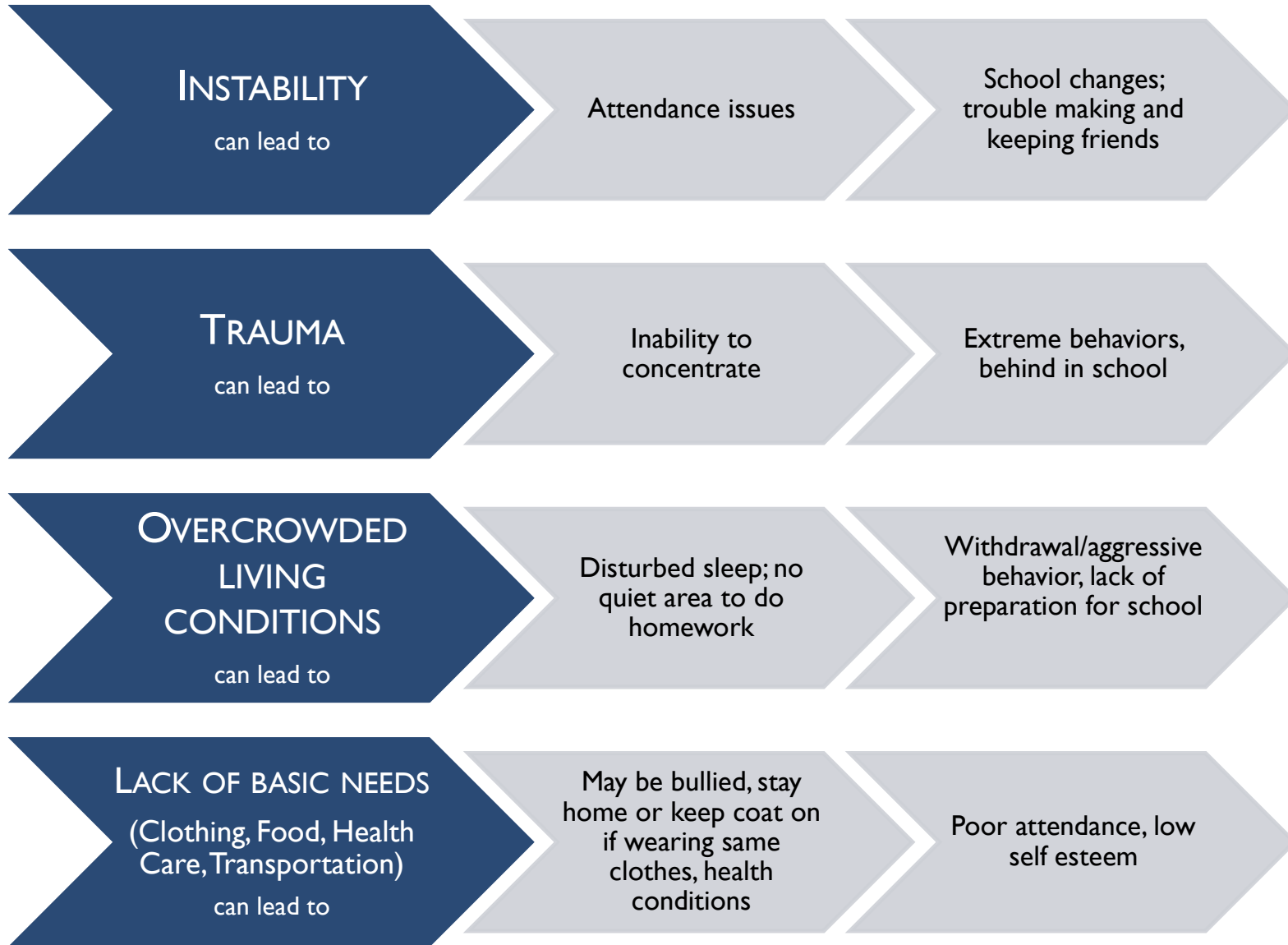
Source: Wilder Research 2015 MN Study

CHILDREN & YOUTH SERVICES

Our mission is to break the generational cycle of homelessness by partnering with parents to support children's academic success, stability, and wellbeing.



EFFECTS ON ACADEMIC POTENTIAL



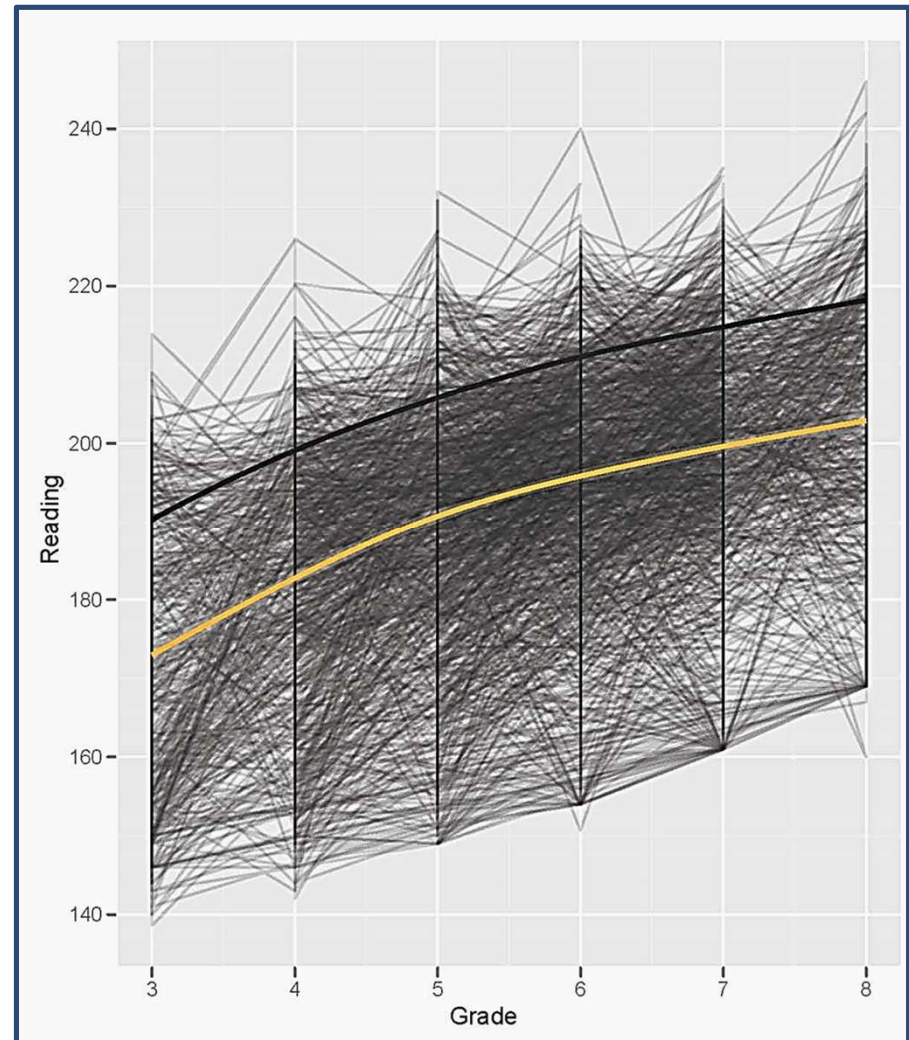
Adapted from MPS Title 1

INDIVIDUAL GROWTH IN READING

Showing individual variability in reading scores by grade

- National Average
- Homeless & Highly Mobile Average

What explains individual differences?



RESILIENCE FACTORS

- Effective caregiving/parenting
- Close relationships with other capable adults
- Close friends
- Intelligence and problem solving skills
- Self-control; emotion regulation; planfulness
- Motivation to succeed
- Self-efficacy
- Faith, hope, belief that life has meaning
- Effective schools
- Effective neighborhoods; collective efficacy

Research from Dr. Ann Masten “Ordinary Magic: Resilience in Development”



JOIN US!



★ Reading Tutor ★ Literacy Mentor ★ Middle School Mentor