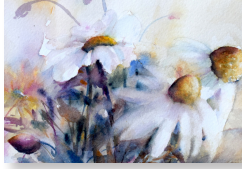
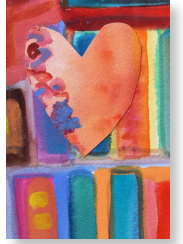


7<sup>th</sup> Annual

# ART SHELTER



**MAY 10, 2017**

**Le Meridien Chambers Hotel  
Marin Restaurant & Bar**

**901 Hennepin Avenue, Minneapolis**

Art 4 Shelter is an annual event featuring over 1,000 original artworks on paper by emerging and established artists. Each 5x7" work is sold for \$35, and 8x10" for \$90.

Proceeds benefit Simpson Housing Services, a Twin Cities nonprofit that provides housing, support, and advocacy for people experiencing homelessness.

**To learn more visit: [art4shelter.org](http://art4shelter.org) or [facebook.com/art4shelter](https://facebook.com/art4shelter)**



**We invite you to partner with Art 4 Shelter in support of Simpson Housing Services.**

Your financial support will help those in a housing crisis find the stability they need to live a successful and productive life. Together, we will end homelessness one person, family, and child at a time.

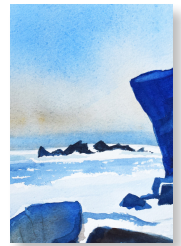
# 2017 SPONSORSHIP LEVELS

**\$10,000** keeps the shelter doors open by paying the rent for two months

**\$5,000** provides breakfast for our shelter guests for a year

**\$2,500** helps subsidize five months' rent for a shelter guest transitioning into permanent housing

**\$1,000** pays for one month of shelter for one shelter guest



## In return you will receive:

- Two complimentary tickets to an exclusive Art 4 Shelter preview event (\$400 value).
- Your company logo or name on our sponsor banner, displayed at the Art 4 Shelter event (1,000 attendees).
- Your company logo in the Simpson Housing Services summer newsletter (Circulation: 8,000).
- Your company logo, linked to your website, or your name, on the Art 4 Shelter home page for one year (1,000 views).
- The excitement of participating in one of the Twin Cities premiere art events.
- The opportunity to make a difference in the lives of men, women and children experiencing homelessness.



**For questions on how to get involved or sponsor Art 4 Shelter, please contact:**

Elisabeth Loeffler, Director of Development and Communications  
612.455.0865 or [eloeffler@simpsonhousing.org](mailto:eloeffler@simpsonhousing.org)